

Edited by
S. Arvanitakis

Tunes from the
"DANCING MASTER"
for soprano recorder solo

CONTENTS

	Page
1. THE CORONATION DAY	3
2. THE MAIDEN'S BLUSH	3
3. THE HAPPY CLOWN (Used in the Beggar's Opera: "I'm like a skiff")	3
4. THE BRITISH TOPER	4
5. A TRIP TO THE BOAR	4
6. ABOUT SHIP	4
7. OLD NOLL'S JIGG	5
8. VIRGIN PULLETS	5
9. ENGLISH PASBY	6
10. THE SIEGE OF LIMERICK	6
11. COTTEY HOUSE	6
12. AMARYLLIS	7
13. THE HIGHLANDER'S WEDDING	7
14. Mr BEVERIDGE'S MAGGOT	7
15. THE ROVER REFORMED	8
16. PORTABELLA	8
17. POOR ROBIN'S MAGGOT (Used in the Beggar's Opera: "I'll be the heart of a man")	9
18. THE TUNEFUL NIGHTINGALE	9
19. SPANISH GIPSIE	9
20. GREENSLEEVES AND YELLOW LACE	10
21. THE BEAUX STRATAGEM	10
22. MANAGE THE MISER	10
23. APLEY HOUSE	11
24. THE PHENIX	11
25. FLY BOAT	11
26. SCOTLAND	12
27. THE HARE'S MAGGOT	12
28. NEVER LOVE THEE MORE	12
29. THE CONSTANT LOVER	13
30. 'TAS WITHIN A FURLONG OF ENDIBORO' TOWN	13
31. HOLE IN THE WALL	14
32. SYLVIA'S SERENADE	14

1. THE CORONATION DAY

Quick march ♩ = 150



2. THE MAIDEN'S BLUSH

Not too fast ♩ = 60



3. THE HAPPY CLOWN

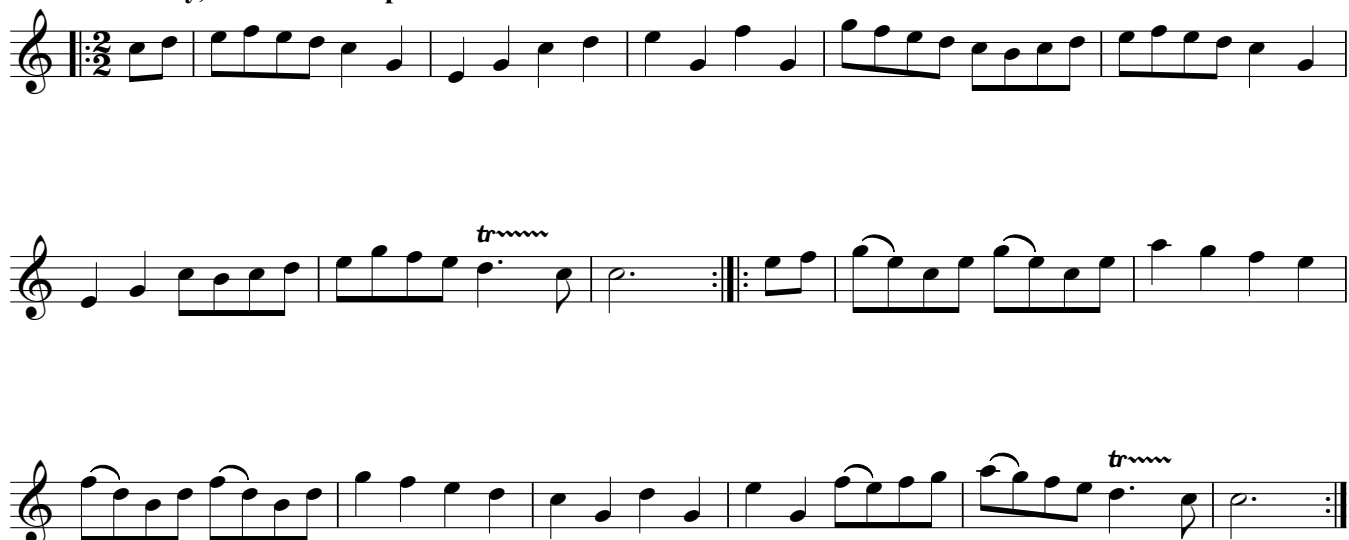
Brightly ♩ = 100

(Used in the Beggar's Opera: "I'm like a skiff")



4. THE BRITISH TOPER

Gaily, at moderate speed $\text{♩} = 74$



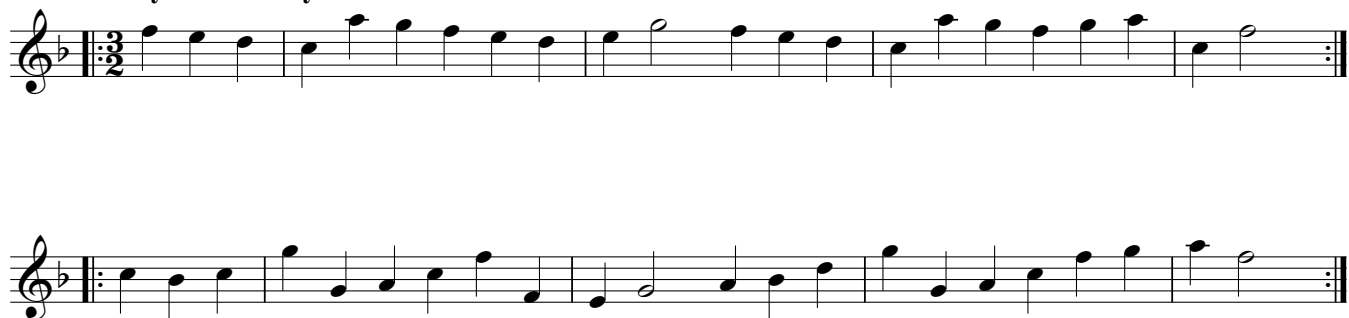
5. A TRIP TO THE BOAR

Gracefully, at moderate speed $\text{♩} = 66$



6. ABOUT SHIP

Firmly and briskly $\text{♩} = 100$



7. OLD NOLL'S JIGG

5

With well marked jig-rhythm, not too fast ♩ = 84



8. VIRGIN PULLETS

Fast and gay ♩ = 108



9. ENGLISH PASBY

Rather slow and graceful $\text{♩} = 60$ 

10. THE SIEGE OF LIMERICK

Confident and fast $\text{♩} = 120$ 

11. COTTEY HOUSE

Smoothly, not too fast $\text{♩} = 68$ 

12. AMARYLLIS

7

Gaily ♩ = 96



13. THE HIGHLANDER'S WEDDING

With well marked jig rhythm ♩ = 124



14. Mr BEVERIDGE'S MAGGOT

Rather slowly ♩ = 60



15. THE ROVER REFORMED

Not too fast $\text{♩} = 60$ 

16. PORTABELLA

Thoughtfully $\text{♩} = 50$ 

17. POOR ROBIN'S MAGGOT

With singing tone ♩ = 60

(Used in the Beggar's Opera: "If the heart of a man")



18. THE TUNEFUL NIGHTINGALE

At moderate speed ♩ = 72



19. SPANISH GIPSIE

Fast and light ♩ = 90



20. GREENSLEEVES AND YELLOW LACE

Slowly, with feeling $\text{♩} = 50$ 

21. THE BEAUX STRATAGEM

Fast and saucy $\text{♩} = 90$ 

22. MANAGE THE MISER

Firmly $\text{♩} = 78$ 

23. APLEY HOUSE

11

In lively time ♩ = 96



24. THE PHENIX

Sprightly ♩ = 90



25. FLY BOAT

Rather plaintively ♩ = 45



26. SCOTLAND

Steady, not fast $\text{♩} = 90$ 

27. THE HARE'S MAGGOT

Bold, not too fast $\text{♩} = 92$ 

28. NEVER LOVE THEE MORE

With singing tone $\text{♩} = 54$ 

29. THE CONSTANT LOVER

13

Gaily ♩ = 84



30. 'T'WAS WITHIN A FURLONG OF EDINBORO' TOWN

Slowly ♩ = 60



31. HOLE IN THE WALL

Slowly, with dignity ♩ = 68



32. SYLVIA'S SERENADE

Lightly, not too fast ♩ = 78



Επιμέλεια
Σ. Αρβανιτάκης

Μελωδίες από τον
"ΔΑΣΚΑΛΟ ΤΟΥ ΧΟΡΟΥ"
για σόλο σοπράνο ρεκόρντερ

ΠΕΡΙΕΧΟΜΕΝΑ

	Page
1. Η ΗΜΕΡΑ ΣΤΕΨΕΩΣ	3
2. ΤΟ ΚΟΚΚΙΝΙΣΜΑ (ντροπή) ΤΗΣ ΝΕΑΡΗΣ	3
3. Ο ΕΥΤΥΧΗΣ ΠΑΛΙΑΤΣΟΣ (Used in the Beggar's Opera: "I'm like a skiff")	3
4. Ο ΒΡΕΤΑΝΟΣ ΜΠΕΚΡΗΣ	4
5. ΤΑΞΙΔΙ ΣΤΟ ΑΓΡΙΟΓΟΥΡΟΥΝΟ (προφανώς αναφέρεται σε τοποθεσία)	4
6. ΣΧΕΤΙΚΑ ΜΕ ΤΟ ΠΛΟΙΟ (εδώ κι' εκεί πάνω στο πλοίο)	4
7. Η ΖΙΓΚΑ(χορός) ΤΟΥ ΓΕΡΟ-ΝΟΛ	5
8. ΧΗΝΑΚΙΑ ΠΑΡΘΕΝΕΣ	5
9. ΑΓΓΛΙΚΟ ΠΕΡΑΣΜΑ	6
10. Η ΠΟΛΙΟΡΚΙΑ ΤΟΥ ΛΙΜΕΡΙΚ	6
11. ΣΠΙΤΙ ΑΣΥΛΟΥ (για γυναίκες)	6
12. ΑΜΑΡΥΛΙΣ	7
13. Ο ΓΑΜΟΣ ΤΟΥ ΒΟΥΝΗΣΙΟΥ (αναφέρεται μόνο σαν Σκωτζέζος βουνήσιος)	7
14. Η ΙΔΙΟΤΡΟΠΙΑ (σκουλήκι) ΤΟΥ ΚΥΡΙΟΥ ΜΠΕΒΕΡΙΤΖ	7
15. THE ROVER REFORMED	8
16. PORTABELLA	8
17. POOR ROBIN'S MAGGOT (Used in the Beggar's Opera: "I'f the heart of a man")	9
18. THE TUNEFUL NIGHTINGALE	9
19. SPANISH GIPSIE	9
20. GREENSLEEVES AND YELLOW LACE	10
21. THE BEAUX STRATAGEM	10
22. MANAGE THE MISER	10
23. APLEY HOUSE	11
24. THE PHENIX	11
25. FLY BOAT	11
26. SCOTLAND	12
27. THE HARE'S MAGGOT	12
28. NEVER LOVE THEE MORE	12
29. THE CONSTANT LOVER	13
30. 'T WAS WITHIN A FURLONG OF ENDIBORO' TOWN	13
31. HOLE IN THE WALL	14
32. SYLVIA'S SERENADE	14

Tunes from the "DANCING MASTER"

1. Η ΗΜΕΡΑ ΣΤΕΨΕΩΣ

Quick march ♩ = 150



2. ΤΟ ΚΟΚΚΙΝΙΣΜΑ (ντροπή) ΤΗΣ ΝΕΑΡΗΣ

Not too fast ♩ = 60



3. Ο ΕΥΤΥΧΗΣ ΠΑΛΙΑΤΣΟΣ

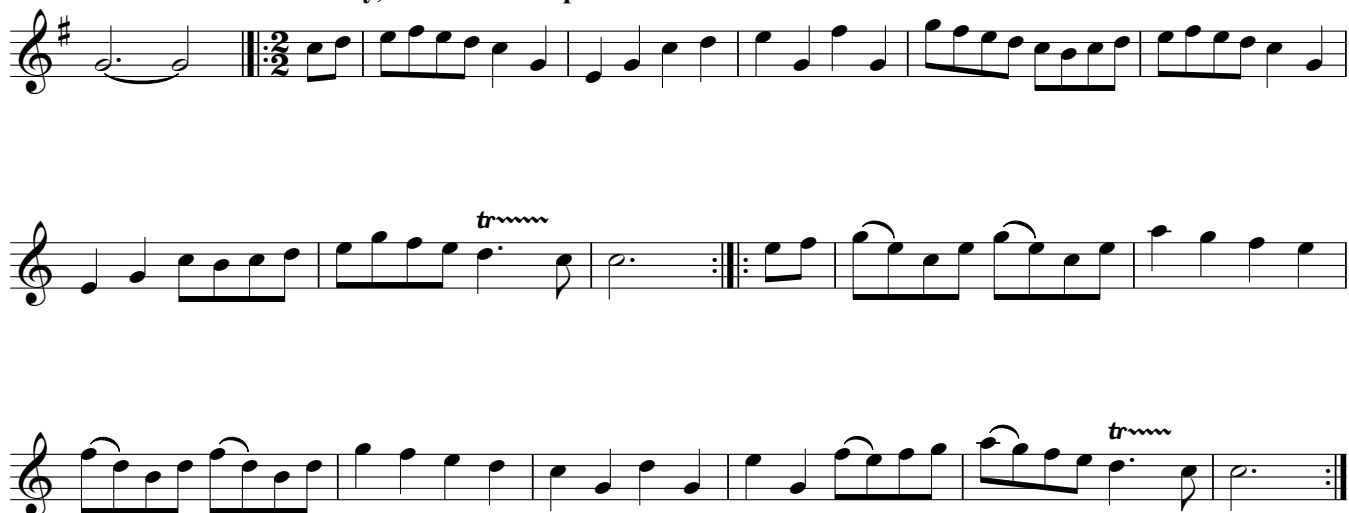
Brightly ♩ = 100

(Used in the Beggar's Opera: "I'm like a skiff")



4. Ο ΒΡΕΤΑΝΟΣ ΜΠΕΚΡΗΣ

Gaily, at moderate speed $\text{♩} = 74$



5. ΤΑΞΙΔΙ ΣΤΟ ΑΓΡΙΟΓΟΥΡΟΥΝΟ

Gracefully, at moderate speed $\text{♩} = 66$



6. ΣΧΕΤΙΚΑ ΜΕ ΤΟ ΠΛΟΙΟ

Firmly and briskly $\text{♩} = 100$



7. Η ΖΙΓΚΑ ΤΟΥ ΓΕΡΟ-ΝΟΛ

5

With well marked jig-rhythm, not too fast ♩ = 84

Musical score for 'Η ΖΙΓΚΑ ΤΟΥ ΓΕΡΟ-ΝΟΛ' in 6/8 time. The score consists of five staves of music. The first staff begins with a treble clef, a key signature of one flat (B-flat), and a 6/8 time signature. The melody is written in a single line. The second staff includes a trill (trm) over a dotted quarter note. The third staff includes a trill (trm) over a dotted quarter note. The fourth staff includes a trill (trm) over a dotted quarter note. The fifth staff includes a trill (trm) over a dotted quarter note. The score ends with a double bar line and repeat dots.

8. ΧΗΝΑΚΙΑ ΠΑΡΘΕΝΕΣ

Fast and gay ♩ = 108

Musical score for 'ΧΗΝΑΚΙΑ ΠΑΡΘΕΝΕΣ' in 3/2 time. The score consists of three staves of music. The first staff begins with a treble clef, a key signature of one flat (B-flat), and a 3/2 time signature. The melody is written in a single line. The second staff includes a trill (trm) over a dotted quarter note. The third staff includes a trill (trm) over a dotted quarter note. The score ends with a double bar line and repeat dots.

9. ΑΓΓΛΙΚΟ ΠΕΡΑΣΜΑ

Rather slow and graceful $\text{♩} = 60$ 

10. Η ΠΟΛΙΟΡΚΙΑ ΤΟΥ ΛΙΜΕΡΙΚ

Confident and fast $\text{♩} = 120$ 

11. ΣΠΙΤΙ ΑΣΥΛΟΥ

Smoothly, not too fast $\text{♩} = 68$ 

12. ΑΜΑΡΥΛΙΣ

7

Gaily ♩ = 96



13. Ο ΓΑΜΟΣ ΤΟΥ ΒΟΥΝΗΣΙΟΥ

With well marked jig rhythm ♩ = 124



14. Η ΙΔΙΟΤΡΟΠΙΑ ΤΟΥ ΚΥΡΙΟΥ ΜΠΕΒΕΡΙΤΖ

Rather slowly ♩ = 60



15. THE ROVER REFORMED

Not too fast $\text{♩} = 60$ 

16. PORTABELLA

Thoughtfully $\text{♩} = 50$ 

17. POOR ROBIN'S MAGGOT

With singing tone ♩ = 60

(Used in the Beggar's Opera: "If the heart of a man")



18. THE TUNEFUL NIGHTINGALE

At moderate speed ♩ = 72



19. SPANISH GIPSIE

Fast and light ♩ = 90



20. GREENSLEEVES AND YELLOW LACE

Slowly, with feeling $\text{♩} = 50$ 

21. THE BEAUX STRATAGEM

Fast and saucy $\text{♩} = 90$ 

22. MANAGE THE MISER

Firmly $\text{♩} = 78$ 

23. APLEY HOUSE

11

In lively time ♩ = 96



24. THE PHENIX

Sprightly ♩ = 90



25. FLY BOAT

Rather plaintively ♩ = 45



26. SCOTLAND

Steady, not fast $\text{♩} = 90$ 

27. THE HARE'S MAGGOT

Bold, not too fast $\text{♩} = 92$ 

28. NEVER LOVE THEE MORE

With singing tone $\text{♩} = 54$ 

29. THE CONSTANT LOVER

13

Gaily ♩ = 84



30. 'T'WAS WITHIN A FURLONG OF EDINBORO' TOWN

Slowly ♩ = 60



31. HOLE IN THE WALL

Slowly, with dignity ♩ = 68



32. SYLVIA'S SERENADE

Lightly, not too fast ♩ = 78

