



ΘΕΩΡΙΑ X => BELLE EPOQUE 2 => ΣΚΙΤΣΑ ΤΟΥ ΚΑΛΟΚΑΙΡΙΟΥ

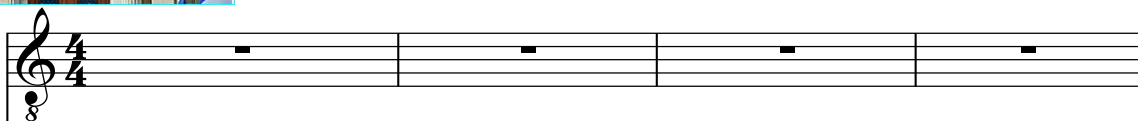
ΥΠΕΡΒΟΡΕΙΟ ΑΓΧΟΣ

(Ερμούπολις 20/9/1995)

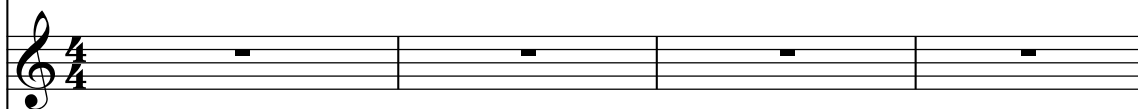
Στίχοι & Μουσική
Σωκράτης Αρβανιτάκης

♩ = 108

Ανδρική φωνή
(ή φωνές σε
ταυτοφωνία)

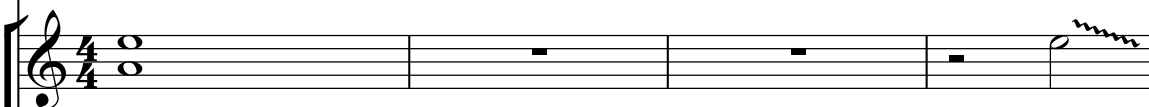


Άλτο
Φλάουτο Ντόλτσε

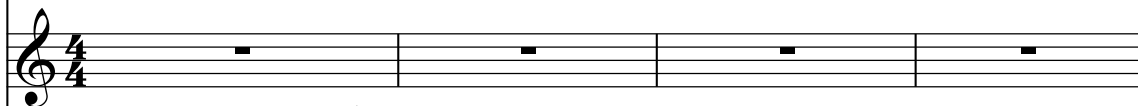


♩ = 108

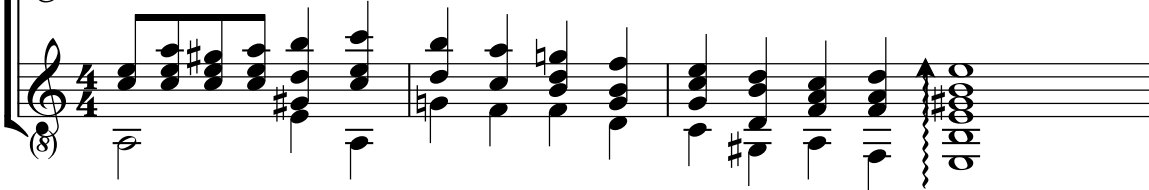
Μπαγλαμάς
(obligato)



Μπουζούκι



Κιθάρα



5

Φ.



1. Πα - γω - μέ - νος υ - περ - βό - ρει - ος απ' τη Θού - λη,

Α. Φλ.



Μπγλ.



Μπζκ.



Κθρ.



9

Φ.

17

Φ. 

8 και το κά-νω σο - βα - ρά κι'ό - χι στ'ας - τεί - α, και το

Α. Φλ. 

Μπγλ. 

Μπζκ. 

Κθρ. 

8

21

Φ. 

8 κά - νω σο-βα - ρά κι'ό - χι στ'ας - τεί - α.

Α. Φλ. 

Μπγλ. 

Μπζκ. 

Κθρ. 

8

4

24

Φ.

Α. Φλ.

Μπγλ.

Μπζκ.

Κθρ.

27

Φ.

Α. Φλ.

Μπγλ.

Μπζκ.

Κθρ.

30

Φ. 

2. Καπτ' Αν-τρέ-α που το πέ-λα ο αγ - να - ντεύ - εις,

Α. Φλ. 

Μπγλ. 

Μπζκ. 

Κθρ. 

34

Φ. 

σκεφ-τι-κός χω-ρίς πο - τέ σου να σα - λεύ - εις,

Α. Φλ. 

Μπγλ. 

Μπζκ. 

Κθρ. 

38

Φ. 

8 πες μου πως κα-τα - λα - βαί - νεις την Ελ - λά - δα,

Α. Φλ. 

Μπγλ. 

Μπζκ. 

Κθρ. 

42

Φ. 

8 να χα-ρώ ή να θρη - νή - σω στη λια - κά - δα? Να χα-

Α. Φλ. 

Μπγλ. 

Μπζκ. 

Κθρ. 

46

Φ. 

Α. Φλ. 

Μπγλ. 

Μπζκ. 

Κθρ. 

50

Φ. 

Α. Φλ. 

Μπγλ. 

Μπζκ. 

Κθρ. 

55

Φ.

8 3.Βλέ - πω έκ-τρο-πα πολ - λά κι' α-κού-ω dis - co,

A. Φλ.

Μπγλ.

Μπζκ.

Κθρ.

59

Φ.

8 και σκυ-λα-δι-κα και rap και δεν τη βρίς - σκω,

A. Φλ.

Μπγλ.

Μπζκ.

Κθρ.

63

Φ.

71

Φ. 

ρεύ - ουν στο νη - σί του Βαμ - βα - κά - ρη.

Α. Φλ. 

Μπγλ. 

Μπζκ. 

Κθρ. 

75

Φ. 

Α. Φλ. 

Μπγλ. 

Μπζκ. 

Κθρ. 

78

Φ.

8

4.Πως φο-βά-μαι τις ξε - νό-γλωσ-σες α -

Α. Φλ.

Μπγλ.

Μπζκ.

Κθρ.

(8)

82

Φ.

8

φί - σες, και της Σύ-ρας μη στε - ρέ-ψου-νε οι

Α. Φλ.

Μπγλ.

Μπζκ.

Κθρ.

(8)

86

Φ. 
8 βρύ - σεζ, ΚΑ-ΠΕ - ΤΑ-ΝΙΕ ΠΟΥ ΠΟ -

Α. Φλ. 

Μπγλ.

92

Φ.

8

πες μας πως να ξε - λας - πώ - σου-με απ' το βούρ-κο, πες μας

Α. Φλ.

Μπγλ.

Μπζκ.

Κθρ.

8

96

Φ.

8

πως να ξε-λασ - πώ - σου - μ' απ το βούρ - κο.

A. Φλ.

Μπγλ.

Μπζκ.

Κθρ.

(8)

14

99 **rit.**

Φ.

Α. Φλ.

Μπγλ.

Μπζκ.

Κθρ.

The musical score for measure 99 is as follows:

- Flute (Φ.):** Whole rest.
- Alto Flute (Α. Φλ.):** Whole rest.
- Clarinet (Μπγλ.):** Whole rest.
- Bassoon (Μπζκ.):** Whole rest.
- Keyboard (Κθρ.):**
 - Measure 99: A complex rhythmic pattern starting with a quarter rest, followed by eighth notes, and ending with a triplet of eighth notes.
 - Measure 100: A complex rhythmic pattern starting with a quarter rest, followed by eighth notes, and ending with a triplet of eighth notes.
 - Measure 101: A complex rhythmic pattern starting with a quarter rest, followed by eighth notes, and ending with a triplet of eighth notes.
 - Measure 102: A complex rhythmic pattern starting with a quarter rest, followed by eighth notes, and ending with a triplet of eighth notes.
 - Measure 103: A complex rhythmic pattern starting with a quarter rest, followed by eighth notes, and ending with a triplet of eighth notes.
 - Measure 104: A complex rhythmic pattern starting with a quarter rest, followed by eighth notes, and ending with a triplet of eighth notes.
 - Measure 105: A complex rhythmic pattern starting with a quarter rest, followed by eighth notes, and ending with a triplet of eighth notes.
 - Measure 106: A complex rhythmic pattern starting with a quarter rest, followed by eighth notes, and ending with a triplet of eighth notes.
 - Measure 107: A complex rhythmic pattern starting with a quarter rest, followed by eighth notes, and ending with a triplet of eighth notes.
 - Measure 108: A complex rhythmic pattern starting with a quarter rest, followed by eighth notes, and ending with a triplet of eighth notes.
 - Measure 109: A complex rhythmic pattern starting with a quarter rest, followed by eighth notes, and ending with a triplet of eighth notes.
 - Measure 110: A complex rhythmic pattern starting with a quarter rest, followed by eighth notes, and ending with a triplet of eighth notes.
 - Measure 111: A complex rhythmic pattern starting with a quarter rest, followed by eighth notes, and ending with a triplet of eighth notes.
 - Measure 112: A complex rhythmic pattern starting with a quarter rest, followed by eighth notes, and ending with a triplet of eighth notes.
 - Measure 113: A complex rhythmic pattern starting with a quarter rest, followed by eighth notes, and ending with a triplet of eighth notes.
 - Measure 114: A complex rhythmic pattern starting with a quarter rest, followed by eighth notes, and ending with a triplet of eighth notes.
 - Measure 115: A complex rhythmic pattern starting with a quarter rest, followed by eighth notes, and ending with a triplet of eighth notes.
 - Measure 116: A complex rhythmic pattern starting with a quarter rest, followed by eighth notes, and ending with a triplet of eighth notes.
 - Measure 117: A complex rhythmic pattern starting with a quarter rest, followed by eighth notes, and ending with a triplet of eighth notes.
 - Measure 118: A complex rhythmic pattern starting with a quarter rest, followed by eighth notes, and ending with a triplet of eighth notes.
 - Measure 119: A complex rhythmic pattern starting with a quarter rest, followed by eighth notes, and ending with a triplet of eighth notes.
 - Measure 120: A complex rhythmic pattern starting with a quarter rest, followed by eighth notes, and ending with a triplet of eighth notes.